

GOING GREEN

Sage and cream hand-painted furniture combine beautifully to create the Doultons' dream kitchen

Laura and David wanted their new kitchen to be a welcoming space that their whole family could enjoy. They opted for a mix of soft, painted furniture with cabinetry in Old English White and muted green Flagon, both by Crown. Rich Carmello granite worktops from Avon Marble complement the subtle shades as do pastel accessories, such as two pretty bench cushions from Cath Kidston



A room that was never intended as a kitchen, in a property that wasn't built to be lived in has been transformed to create Laura Doulton's dream scheme. 'The house was built in the 1890s as the estate office to the Ashton Court Estate,' explains Laura, mum to Jack, 10, Emily, six, and Josh, two. A large, comfortable living room now stands where the main office was and the kitchen, which was previously situated in the hall, is sited in an old ante-chamber. 'None of the previous owners had families and never thought about using this room as a kitchen,' continues Laura.

When it came to the design, Laura and husband David were keen to create a multifunctional, practical room that the whole family could spend time in. Having scoured various kitchen magazines, Laura felt she was armed with enough ideas to approach some local companies. 'I had already decided that I wanted cream furniture with a duck-egg blue or green accent,' she says.

It was the couple's builder who recommended they contact The Bristol Kitchen Company. They met designer Howard Purse and after lots of discussion, he drew up a plan of bespoke wooden furniture, hand-painted in subtle shades of cream and sage green. Although the couple had liked the designs of another kitchen company, they felt that Howard understood their needs better.

'We liked both companies as their styles were similar but we wanted to keep control of the design and thought we could do this with Howard,' explains Laura.

While Laura had definite ideas about the look and ergonomics of the new scheme, David was particularly interested in the kitchen appliances they were going to include. 'He grew up with an Aga and was adamant he wanted us to have one. He also really wanted us to incorporate a double Belfast sink in the new design but because we didn't want to traipse around looking for stuff, Howard was brilliant at sourcing items for us,' says Laura. 'He found the reconditioned 1930s Aga after we said we wanted a cream one.' Having removed a large fireplace to allow space for their Aga, the couple also created a splendid arched entrance to the kitchen. 'It's the first room you walk into and I love having no door because you see the kitchen straight away,' explains Laura. 'It's so light and spacious.'

The work complete, there is no question that the Doultons are thrilled with their new kitchen. 'I spend most of my time in here, now,' says Laura. 'I love coming home and putting my head around the corner through the arch. I love that sight: the island, the Aga and the view of the hills beyond our garden from the window. It is my first proper dream kitchen,' she smiles. **BK**

MY FAVOURITE DESIGN ELEMENT: 'My island because I love standing at it looking out into the garden. The granite is great because you can chop vegetables straight onto it. I love walking into the kitchen and seeing it'



Laura wanted oak details in the design to match her flooring. The shelf below the sink, as well as wine and plate racks, bring the kitchen together perfectly. The walls have been painted in Dulux's Bracken Salts 5



◀ A reconditioned two-oven Aga takes centre stage in the Doultons' new kitchen. It is surrounded by a magnificent canopy with hand-painted side dentils and task downlighters integrated above the cooker. Next to it, a larder cupboard sited on the worktop boasts granite shelves to preserve perishable food

Laura and David were really taken with the flower cut-outs they saw at The Bristol Kitchen Company's showroom and asked to have them on the doors of their larder so air could circulate ▶



◀ In addition to a double Belfast sink, Laura opted to include a round prep bowl in the island, which is ideal for rinsing vegetables. A swan-necked tap from Perrin & Rowe is a stylish accompaniment ▶▶▶▶▶▶



Housed within a bank of cabinetry, Laura and David are delighted with their Whirlpool American-style fridge freezer. 'It's the best buy of all,' says Laura. Above, designer Howard has maximised space in the kitchen by incorporating a 16-bottle oak rack to store the couple's wine. The cake tin on the table came from ECP Design



◀ A tall, narrow space between the fridge and the sink area houses a clever pull-out shelving unit. It's an ideal spot for Laura to keep her dry goods as she can find what she wants easily

‘My new kitchen has changed the way we live because I spend most of my time in here now with my three small children. It’s my first proper dream kitchen and lots of my friends who come in for the first time say they love it, especially because of the view’

LAURA DOULTON

DESIGN & CABINETS

- Howard Purse at **The Bristol Kitchen Company**, 59 Fitzgerald Road, Knowle, Bristol, BS3 5DH (0117 914 0340) www.thebristolkitchencompany.co.uk
- Bespoke hand-painted HDF furniture with glass cabinetry

WORKTOPS

- Carmello granite, Avon Marble. Price per linear m **£300**
- Solid European oak. Price per linear m **£300**

SINKS & TAPS

- Classic Double 80 Belfast ceramic sink, Villeroy & Boch **£322**
- RUX110 Rotundo undermounted round single-bowl sink, Franke **£190**
- 4460PFWPC Phoenician monobloc mixer tap with porcelain lever handles in pewter; Perrin & Rowe **£250**
- 4360PFWPC Phoenician monobloc mixer tap with porcelain lever handles and separate rinse in pewter; Perrin & Rowe **£300**
- ISE78 waste disposal unit, In-Sink-Erator **£250**

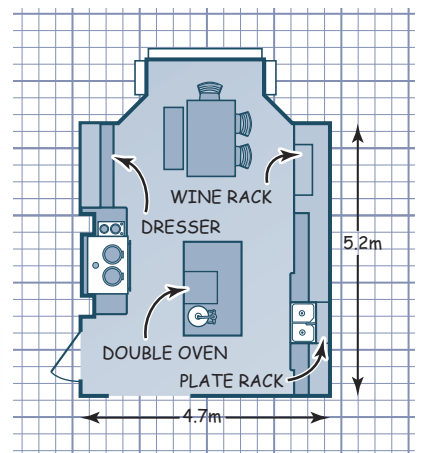
APPLIANCES (shown)

- Reconditioned two-oven Classic Aga in cream, approx **£3,750**
- U1722 built-under double oven, Neff **£650**
- N4263 two-zone induction hob, Neff **£450**
- 20RUD4 American-style fridge freezer; Whirlpool **£1,033**

APPLIANCES (not shown)

- Fully integrated dishwasher; Miele **£846**

☎ For stockists, see page 162



GUIDE PRICE

- Starting price for a The Bristol Kitchen Company design **£25,000**